

OPSIS LiquidLINE KjelROC Distillation Unit

Distillation System with Unique Level
of Serviceability and Automation



WHY KJELROC DISTILLATION UNIT?

In many tests there is a need to separate the substance of interest from the rest of the sample prior to analysis. e.g. SO_2 in food/wine and free fatty acids. Here a steam distillation often is the best solution and with the KjelROC Distillation Unit the control of the process is optimized.

OP SIS LiquidLINE and the KjelROC Distillation unit brings;

- Unique Level of Servicability with OP SIS LiquidLINE maintenance program and state-of-the-art service systems.
- Easy expandable system, possible to easy upgrade to a full KjelROC Analyzer.
- Complete Automatic System including Wireless communication for simplified set-up and traceability.

OPSIS LIQUIDLINE REDUCES MAINTENANCE COSTS

- Unique Service System saves time and costs for maintenance.
- Component lifetime and maintenance costs are optimized with the help of OPSIS Component traceability program.
- Prepared for ISO 17025 and GLP features reduces time and costs when integrating the instrument into the Lab procedures.

EXPANDABLE SYSTEM, LOWERS COSTS WHEN LAB REQUIREMENTS INCREASE

- The KjelROC Distillation Unit can easily be upgraded to a full KjelROC Analyzer at a later stage. This saves considerable cost in case you later requires a full system.
- The KjelROC Distillation Unit and the KjelROC Analyzer shares similar User Interfaces, which makes it easy for an operator to handle both systems.

AUTOMATION AND TRACEABILITY INCREASES EFFICIENCY AND REDUCES COSTS

- Complete automation, including automatic addition of water, alkali and receiver solution.
- Full traceability with possibility to track samples as well as retrieve log files from the system.
- The possibility to send weights and retrieve log files wirelessly makes it easy to implement fully traceable samples in your lab.

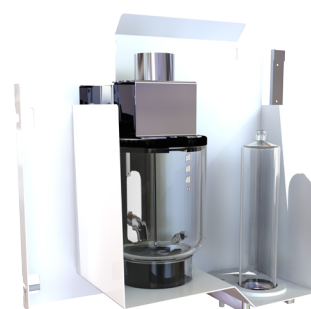
BENEFITS

After more than 25 years of experience within analysis, we will now raise the standard for Quality Instruments, Information Exchange and Analysis in samples like Food, Forage and Liquids. The KjelROC is prepared for the future with several new, unique, benefits.

EXPANDABLE SYSTEM

The KjelROC Distillation Unit is designed for easy expansion to a full KjelROC Analyzer system.

- Easy addition of the Titration Module and exchange of Front door.



FULL AUTOMATION

The KjelROC Distillation Unit is a fully automatic system that requires no manual intervention.

- User defined automatic addition of Water, Alkali and Receiver Solution.
- Steam Generator can be regulated, from 10 to 100%.
- User defined behaviour with programmable delay and selection of tube drain.
- Retrieve log files for easy maintenance support, which lowers maintenance costs.

FLEXIBLE WIRELESS COMMUNICATION

Easy exchange with Wireless technology (WiFi) and standard File Transfer Protocol (ftp) makes it easy to set up your unit and makes it possible to trace your analyses on the Distillation Unit.

- Transfer to and from laptop computers, tablets and mobile phones - basically any device that have an WiFi client. Offers unique flexibility to integrate the instrument into the Lab at low cost.
- Send sample information to the instrument, to ensure traceability according to GLP.
- Retrieve log files for easy maintenance support, which lowers maintenance costs.



ISO 17025 PREPARED WITH ADAPTIVE WORKFLOW

Traceability of data files, QR component codes and user access levels to make it easy to implement ISO 17025. Use your existing Lab procedures or use our ready to use programs. The instrument is fully flexible to adapt to your demands which reduces integration costs.

- OPSIS Component traceability program allows tracking of components. It is also possible for a service engineer to retrieve lifetime status of main components.
- The KjelROC offers different access levels and menus according to GLP requirements. A dedicated menu allows the Lab manager to further control settings of the instrument such as Factory defaults and Time&Date.
- An extensive set-up of User Protection safety systems is included in the KjelROC Distillation Unit. Sensors will, for example, detect if tube is missing or if protection door is open. Automatic Tube Draining eliminates the need for handling hot reagents after distillation. Several other systems are also monitoring the operator activities.



A UNIQUE SYSTEM ALLOWS
INDIVIDUAL TEST OF EVERY
COMPONENT IN THE INSTRUMENT,
WHICH REDUCES MAINTENANCE
COSTS

UNIQUE LEVEL OF SERVICEABILITY

The KjelROC Distillation Unit has the latest, state-of-the-art, service system. This can make considerable cost savings for maintenance.

- Unique system that allows individual test of every component in the instrument via a Service menu. Saves time when identifying a component failure.
- OPSIS Component traceability program with QR codes on all main components makes it easy to order the correct spare part. Saves time when replacing components.
- Follow lifetime of internal components by Instrument Log file and recommend exchange of components prior to possible breakdown.
- Distillation Log files makes it easy to send service information back to OPSIS LiquidLINE technical support. Saves time when identifying application or instrument issues.
- Automatic self test with recommendations for user actions.
- Dedicated Managers menu to perform QC operations.



OPSIS COMPONENT
TRACEABILITY PROGRAM MEANS
THAT WE TRACK INDIVIDUAL
COMPONENTS FROM FACTORY
TO CUSTOMER VIA QR CODES.

KJELROC AUTO DISTILLATION UNIT, KD-210-A

Technical Data	
Operating Temperature	5°C - 40°C, max 80 % relative humidity
Power Supply	190-240 VAC, 50-60 Hz, 10A
Power Consumption	max 2200 W
Cooling Water Consumption	1,75 l/min at 20°C
Steamgen. water Consumption	approx. 200 ml/analysis
Dimensions (WxHxD)	430 x 700 x 330 mm
Weight	30 kg
Graphics Display	7" 800x480 colour touchscreen
Safety	Safety sensors (Tube in Place-, Protection door- and Service door), Steam Generator sensors, Drip Tray, Tank level detectors, Maintenance warning systems
Electronic Steam Regulation	10-100%
Distillation Head	Easily exchangeable Splashhead with only one tube connector made of glass to reduce carry-over effects.
Password Protection	Three Levels with separate Managers Menu
Reagent Level Warning	4 x RJ-11 (External tank levels), 1 x RJ-11 (titration tank), OPSIS LiquidLINE flexible level detectors - adaptable for different reagent tanks.
Data Communication	Wireless, 802.11 b/g (Ethernet optional instead of Wireless)
Automatic Distillation and Titration	Programs for automatic control of cooling water, dilution water, sodium hydroxide and receiver solution as well as automatic emptying of tube.

Specifications subject to change without notice

Opsis AB, Box 244
SE-244 02 Furulund Sweden
Telephone +46 46 72 25 00
Telefax +46 46 72 25 01
E-mail info@opsis.se
www.liquidline.se



LP 1002
2013 12



OPSIS AB • +46 46 72 25 00 • info@opsis.se • www.liquidline.se