

# OLYMPIA SERIES NITROGEN AND DRY AIR GENERATOR AN 60-1



Silently powerful

**SUITABLE FOR: LCMS SINGLE OR MULTIPLE  
INSTALLATION, MP-AES AND  
ALL ANALYZERS LOOKING FOR DRY AIR AND NITROGEN**

## VARIABLE SPEED

Automatic speed regulation proportional to the flow delivered



## SILENT

Special soundproofing and anti-vibration solutions, designed specifically for the laboratory



## ENERGY SAVING

-30%\* energy consumption, thanks to sophisticated power optimization software



## LOW MAINTENANCE COSTS

Less engine stress and longer compressor life thanks to the variable speed and low running temperature

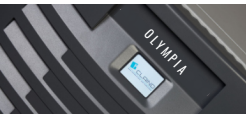


## TECHNOLOGICAL

Equipped with "Scroll" Oil Free technology and built-in membrane dryer



\*compared to equivalent systems



## REMOTE CONTROL

Remote connection to any device with the IoT Claind4You platform

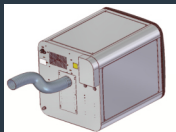


# OPTIONALS



DUCTING FOR HEAT DISPOSAL/  
RECOVERY

Code 433.30.Z000



VERTICAL 100 L VOLUME RESERVOIR

Code 250.30.B116



SINGLE PRESSURE REGULATOR

Code 433.30.Z200.00



DOUBLE PRESSURE REGULATORS

Code 433.30.Z210.00

## RELATED PRODUCTS...

OLYMPIA SERIES  
OIL FREE COMPRESSED  
AIR GENERATOR  
A200-1



SUITABLE FOR: LCMS, LAB PNEUMATICS  
GC-TOC, ATOMIC ABSORPTION AND ALL  
ANALYZERS LOOKING FOR OIL FREE DRY AIR

OLYMPIA SERIES  
HIGH CAPACITY NITROGEN  
GENERATOR  
N70-1



SUITABLE FOR: LCMS SINGLE OR MULTIPLE  
INSTALLATION SAMPLE PREPARATION AND  
ALL ANALYZERS LOOKING FOR DRY NITROGEN



# TECNICAL SHEET

|                                 |   |                         |                 |              |
|---------------------------------|---|-------------------------|-----------------|--------------|
| PRODUCT CODE                    | 433.30.0020.00  |                         |                 |              |
| MAX FLOW RATE CAPACITY          | Dry Air +Nitrogen = 70NI/min  |                         |                 |              |
| FLOW RATE Combinations Examples | Gas   | Use                     | Capacity NI/min | Pressure bar |
| AB SCIEEX Conf.1                | Nitrogen  | Curtain & CAS Gas       | 18              | 3,8 ÷ 4,2    |
|                                 | Dry Air   | Source Exhaust          | 25              | 3,8 ÷ 7,3    |
|                                 | Dry Air   | Gas 1 – Gas 2           | 26              | 7,0 ÷ 7,3    |
| AB SCIEEX Conf.2                | Nitrogen  | Curtain & CAS Gas       | 18              | 3,8 ÷ 4,2    |
|                                 | Nitrogen  | Source Exhaust          | 25              | 3,8 ÷ 7,3    |
|                                 | Dry Air   | Gas 1 – Gas 2           | 26              | 7,0 ÷ 7,3    |
| MP-AES Organic                  | Nitrogen  | Plasma support Gas      | 25              | 4,5 ÷ 6      |
|                                 | Dry Air   | POP Gas                 | 25              | 4,5 ÷ 6      |
|                                 | Dry Air   | EGCM                    | 1,5             | 4,5 ÷ 6      |
|                                 | Dry Air   | Monochromator Air purge | 10              | 4,5 ÷ 6      |
| AIR COMPRESSOR TECHNOLOGY       | Oil free SCROLL   |                         |                 |              |
| OUTPUT PRESSURE                 | 7,5 bar   |                         |                 |              |
| ELECTRICAL SUPPLY               | 230 Vac ± 10% 60 Hz 2,5kW Single Phase  |                         |                 |              |
| PROTECTION INDEX                | IP20  |                         |                 |              |
| NOISE                           | Minimum: 54 dBA Medium: 58 dBA  |                         |                 |              |
| OPERATING TEMPERATURE           | 5°C - 40°C/40°F - 100°F   |                         |                 |              |
| STORAGE TEMPERATURE             | 5°C - 50°C/40°F - 125°F   |                         |                 |              |
| ENVIRONMENTAL HUMIDITY          | max 90% without condensation  |                         |                 |              |
| MAX ALTITUDE                    | Tested up to 2000 m from the sea level  |                         |                 |              |
| DIMENSIONS                      | L x D x H cm 68 x 83 x 79,5 27,8" x 32,5" x 31,5"   |                         |                 |              |
| WEIGHT                          | 155 kg/330 lbs  |                         |                 |              |
| THERMAL DISPERSION              | 2340 J/sec  |                         |                 |              |
| PNEUMATIC CONNECTIONS           | Air and nitrogen outlet G1/2" female<br>Condensate drain PVC pipe Øe 9 mm and collection tank                             |                         |                 |              |
| ELECTRICAL CONNECTION           | 5 mt power supply cable; Plug IEC309, 2-poles plus blue earth 32" IP44 according to standards IEC 60309-1 and IEC 60309-2 |                         |                 |              |
| DATA CONNECTOR                  | Ethernet MQTTS, MOD- BUS data communication protocol; RJ45 cable - WIFI   |                         |                 |              |
| WARRANTY                        | 2 years from Delivery   |                         |                 |              |



1979

THE YEAR OUR  
COMPANY WAS  
FOUNDED



3.000

OUR CUSTOMERS  
ACROSS THE  
WORLD



24.000

OUR INSTALLATIONS  
WORLDWIDE



32

COUNTRIES  
SUPPORTED  
WORLDWIDE

# SERVICES

- WARRANTY EXTENSION
- DYNAMIC MAINTENANCE CONTRACTS
- DYNAMIC FULL-RISK CONTRACTS
- IQ/OQ CERTIFICATIONS
- CLAIND4YOU

Visit our website [www.claind.it](http://www.claind.it) or  
call us at **+39 0344 56603**

## HEADQUARTER:

Via Regina 24  
22016 Tremezina  
Loc. Lenno (CO)  
Italy

info@claind.it