



Stable – start to finish

Vanquish Access HPLC System



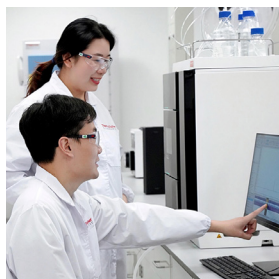
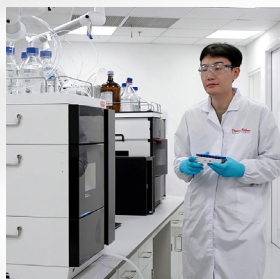


Essential science

Thermo Fisher Scientific recognizes the challenges you face in your busy labs, with the need to maintain productivity while ensuring reliable and reproducible data.

Designed for your essential analyses, the Thermo Scientific™ Vanquish™ Access HPLC system helps prevent out-of-spec conditions, sample rework, unplanned repairs, and extra audit scrutiny.

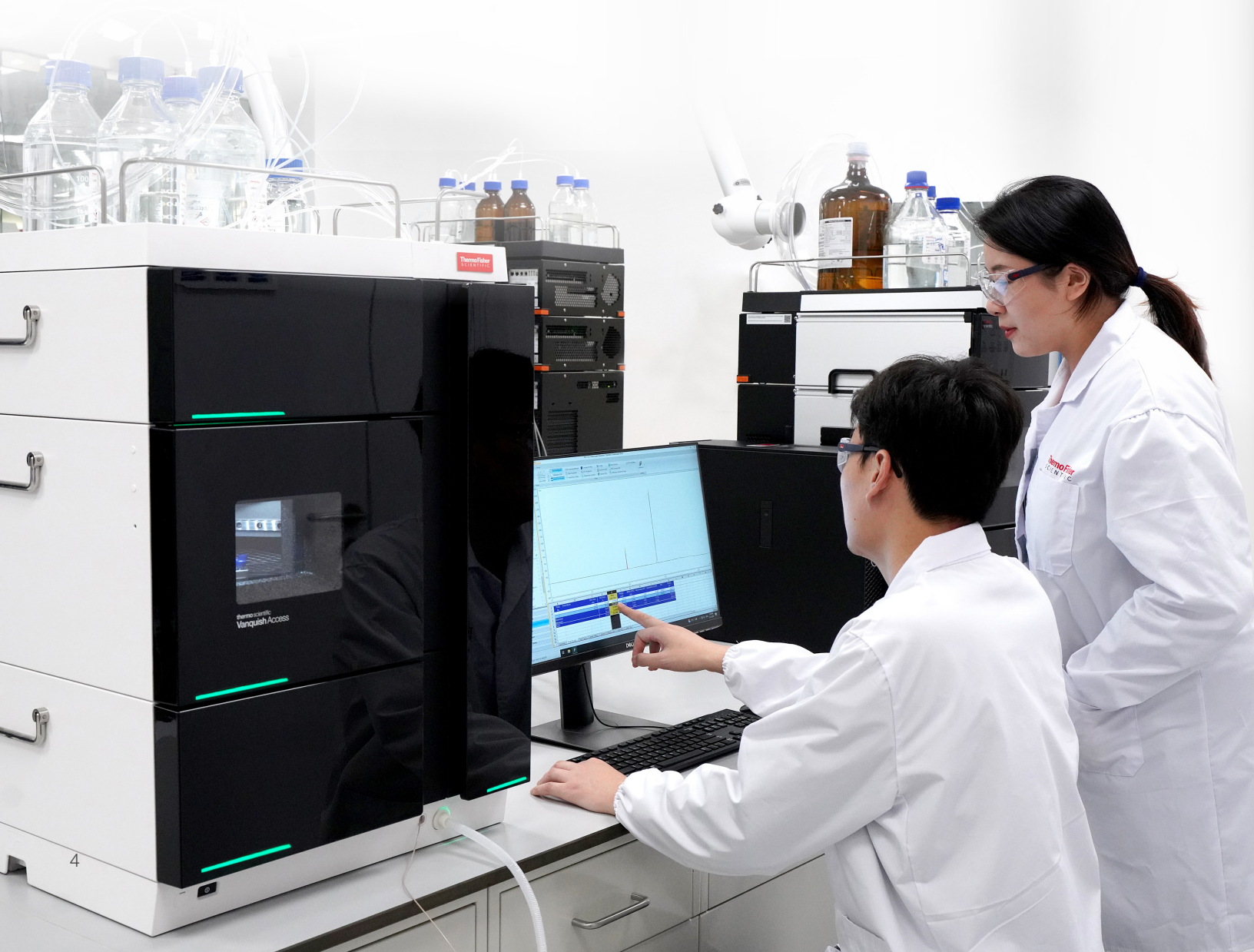
The intelligently configured, cost effective and fit for purpose Vanquish Access HPLC system delivers stable operation and trouble-free performance you can depend on.

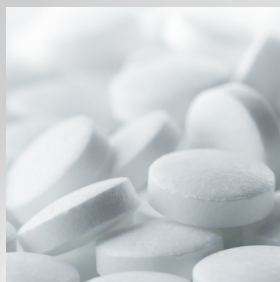
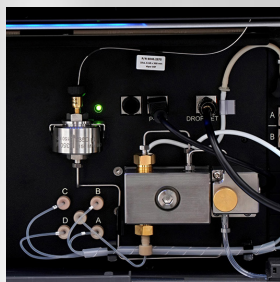


Reliable and robust

Ensure the safety of your medicines and products with reliable, repeatable routine testing separations, batch to batch, instrument to instrument, and site to site using the Vanquish Access HPLC system.

- **Proven technology** – A reliable HPLC system built on Thermo Scientific™ Vanquish™ LC technology.
- **Robust performance** – Maximize uptime with software notifications of real-time health checks alongside built-in diagnostic and maintenance procedures.
- **Repeatable separations** – Highest flow and gradient precision and reproducibility using Thermo Scientific™ SmartFlow™ pump technology.
- **Reliable leak-free connections** – Easy, tool-free column installation using Thermo Scientific™ Viper™ Fingertight Fittings.
- **Trouble-free method transfer** – Achieve the same separations without needing to replumb or requalify with the built-in Vanquish Access HPLC System flow path tuning.
- **Easy to operate** – Automation, compliance and networking capabilities are delivered through a tight connection to Thermo Scientific™ Chromeleon™ Chromatography Data System (CDS).





UV detector

Thermostatted
autosampler

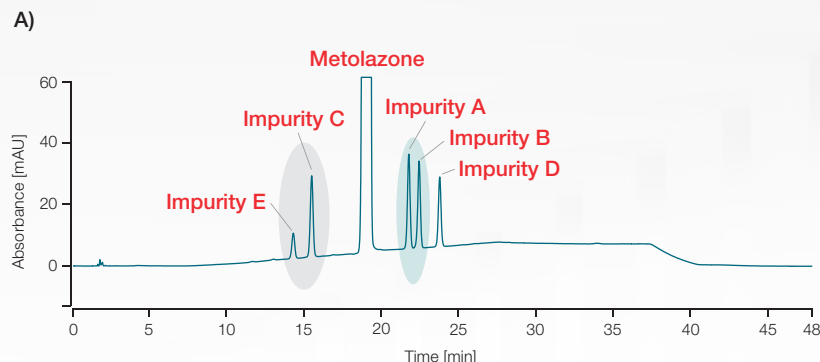
Quaternary pump



Column
compartment

Stable – start to finish

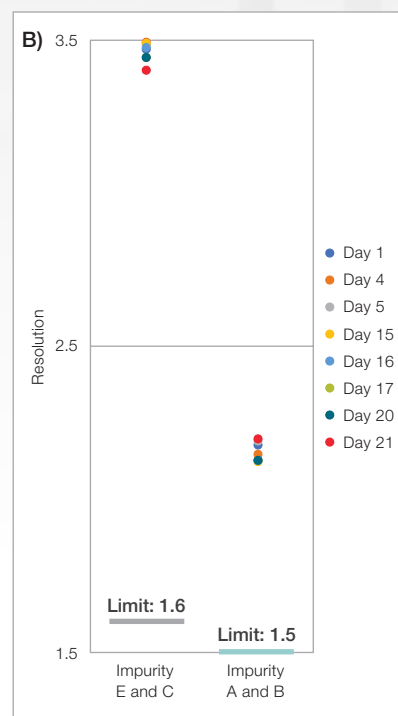
Vanquish Access HPLC system—your go-to system for performing Pharmacopeia methods.



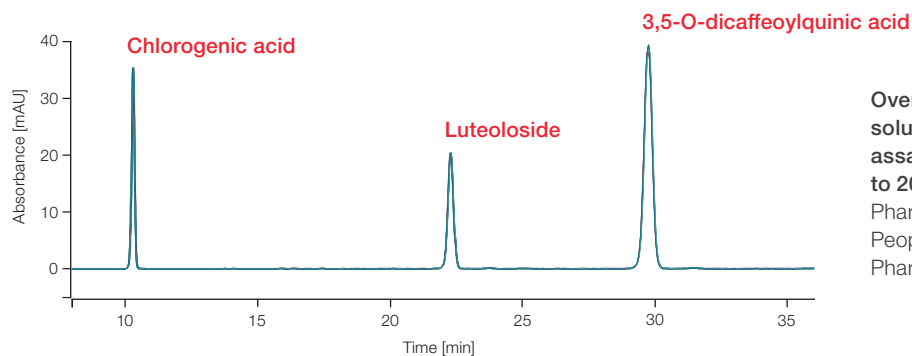
A) Chromatogram of API metolazone and its five related impurities.

Reference: European Directorate for the Quality of Medicines & HealthCare; European Pharmacopoeia (Ph. Eur.) Online, 9th edition 2018 (9.0), monograph 1757: Metolazone.

B) Stability: Resolution of critical peak pairs on 8 different days across 3 weeks.

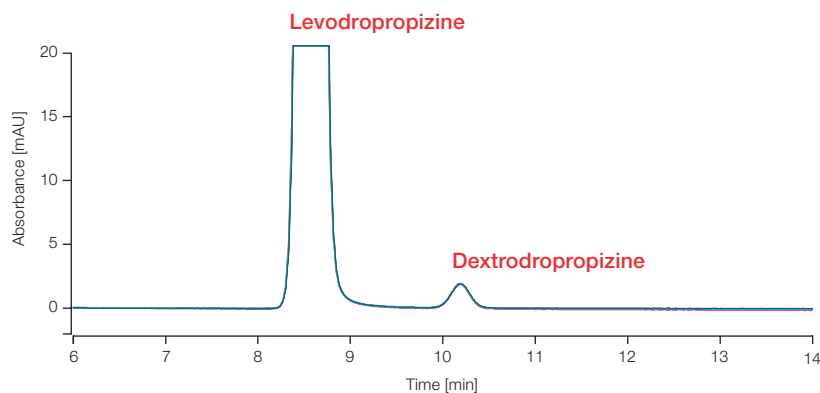


Repeatable separations, batch to batch, instrument to instrument, and site to site.

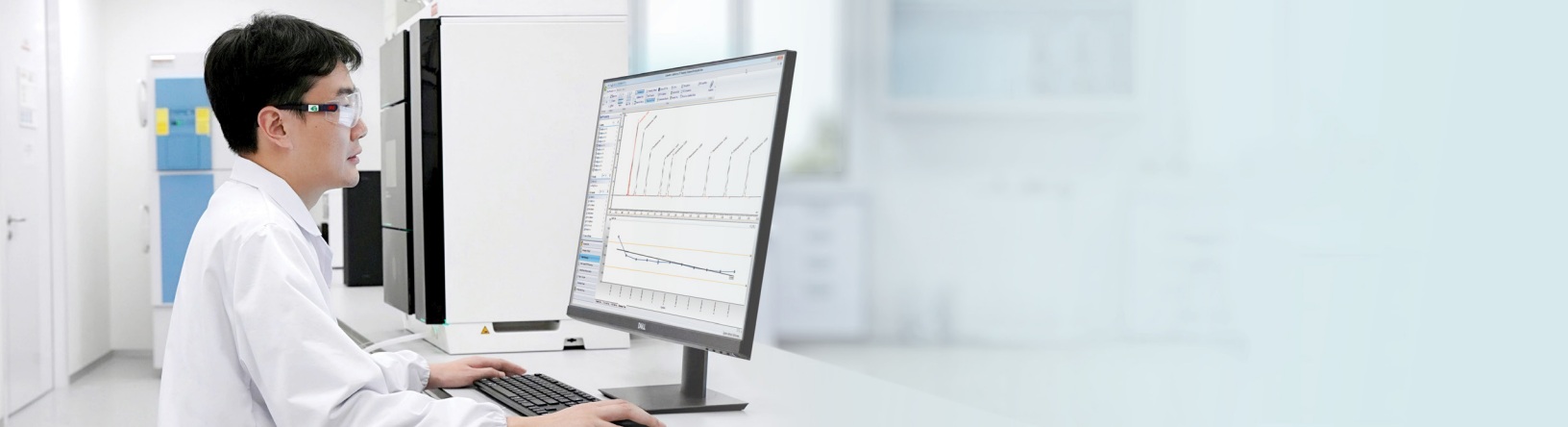


Overlay of 6 injections of reference solution for multi-component content assay of chrysanthemum according to 2020 ChP method. Reference: Pharmacopoeia Commission of the People's Republic of China. Chinese Pharmacopoeia (Part 1), 2020:490.

Normal phase ready out of the box.



Overlay of 6 injections for determination of dextropropizine in levodropropizine products by a normal-phase (NP) HPLC 2020 ChP method. Reference: Chinese Pharmacopoeia Commission, Pharmacopoeia of the People's Republic of China[S]. Volume 2, 2020:188.



Delivering reliability and ease of use

Get the best reliability, ease of use, and performance by pairing the Vanquish Access HPLC system with Chromeleon CDS.

- **Reliability ensured** – Robust, fully featured instrument control in all Chromeleon software environments.
- **Easy to use** – Do everything in one place; acquire, process, and report data without exporting.
- **Compatibility built-in** – No need to upgrade with support from version 7.2.10 MUd onwards.
- **Secure performance** – Eliminate errors with fast, accurate, and reproducible sequence creation with eWorkflow™ procedures.
- **Data integrity** – Never lose any data with gold standard network failure protection.
- **Universal access** – Work remotely with all functionality across rooms, labs, and sites.
- **Quality assured** – More right the first time analyses with built-in system suitability test and intelligent run control.
- **Compliance confirmed** – Comprehensive audit trails, versioning and user control with tools to streamline audit trail reviews to meet regulatory requirements.

Completing the picture

Consumables designed to work with your instrument can make all the difference to your analysis.

With the guaranteed quality of our leading analytical columns, sample preparation solutions and consumables, such as sample vials and well plates, ensures the reproducibility of your methods and compatibility with the Vanquish Access HPLC.



Thermo Scientific LC award-winning portfolio overview



Analytical HPLC and UHPLC

Essential



Dependability



Flexibility



Performance



Feature/benefit	Thermo Scientific™ Vanquish™ Access HPLC System	Thermo Scientific™ Vanquish™ Core HPLC Systems	Thermo Scientific™ Vanquish™ Flex UHPLC Systems	Thermo Scientific™ Vanquish™ Horizon UHPLC System
Pressure limit	500 bar	700 bar	1,000 bar	1,500 bar
Detector options	●	● ●	● ● ●	● ● ●
Pump options	Quaternary	Isocratic	Quaternary	Binary
		Quaternary	Binary	
		Binary		
Application type	Routine	Routine	Routine	Method development
		Method development	Method development	Research
			Research	
Optimal column particle size	3-5 µm	3-5 µm	1.5-3 µm	1.5-3 µm
Vials and caps	Thermo Scientific™ SureSTART™ Performance Level 1 Products	Thermo Scientific™ SureSTART™ Performance Level 2 Products	Thermo Scientific™ SureSTART™ Performance Level 3 Products	

● = Good ● ● = Better ● ● ● = Best

 Learn more at thermofisher.com/vanquishaccess

General Laboratory Equipment – Not For Diagnostic Procedures. © 2024 Thermo Fisher Scientific Inc. All rights reserved. All trademarks are the property of Thermo Fisher Scientific and its subsidiaries unless otherwise specified. This information is presented as an example of the capabilities of Thermo Fisher Scientific products. It is not intended to encourage use of these products in any manner that might infringe the intellectual property rights of others. Specifications, terms and pricing are subject to change. Not all products are available in all countries. Please consult your local sales representative for details.

BR002856-EN 0824S

thermo scientific